

AN ORDINAL CLASSIFICATION FOR THE FAMILIES OF FLOWERING PLANTS

The Angiosperm Phylogeny Group

CLASSIFICATION OF FLOWERING PLANTS

Amborellaceae	Nartheciaceae
Austrobaileyaceae	Petrosaviaceae
Canellaceae	Triuridaceae
Chloranthaceae	
Hydnoraceae	Acorales Reveal
Illiciaceae	Acoraceae
Nymphaeaceae	
[+Cabombaceae]	Alismatales Dumort.
Rafflesiaceae	Alismataceae
Schisandraceae	Aponogetonaceae
Trimeniaceae	Araceae
Winteraceae	Butomaceae
	Cymodoceaceae
Ceratophyllales Bisch.	Hydrocharitaceae
Ceratophyllaceae	Juncaginaceae
	Limnocharitaceae
Laurales Perleb	Posidoniaceae
Atherospermataceae	Potamogetonaceae
Calycanthaceae	Ruppiaceae
Gomortegaceae	Scheuchzeriaceae
Hernandiaceae	Tofieldiaceae
Lauraceae	Zosteraceae
Monimiaceae	
Siparunaceae	Asparagales Bromhead
	Agapanthaceae
Magnoliales Bromhead	Agavaceae
Annonaceae	Alliaceae
Degeneriaceae	Amaryllidaceae
Eupomatiaceae	Anemarrhenaceae
Himantandraceae	Anthericaceae
Magnoliaceae	Aphyllanthaceae
Myristicaceae	Asparagaceae
	Asphodelaceae
Piperales Dumort.	Asteliaceae
Aristolochiaceae	Behniaceae
Lactoridaceae	Blandfordiaceae
Piperaceae	Boryaceae
Saururaceae	Convallariaceae
	Doryanthaceae
	Hemerocallidaceae
	Herreriaceae
	Hesperocallidaceae
	Hyacinthaceae
	Hypoxidaceae

MONOCOTS

Corsiaceae
Japonoliriaceae

Iridaceae
Ixioliriaceae
Lanariaceae
Laxmanniaceae
Orchidaceae
Tecophilaeaceae
Themidaceae
Xanthorrhoeaceae
Xeronemataceae

Dioscoreales Hook.f.
Burmanniaceae
Dioscoreaceae
Taccaceae
Thismiaceae
Trichopodaceae

Liliales Perleb
Alstroemeriaceae
Campynemataceae
Colchicaceae
Liliaceae
Luzuriagaceae
Melanthiaceae
Philesiaceae
Ripogonaceae
Smilacaceae

Pandanales Lindl.
Cyclanthaceae
Pandanaceae
Stemonaceae
Velloziaceae

COMMELINOIDS

Abolbodaceae
Bromeliaceae
Dasypogonaceae
Hanguanaceae
Mayacaceae
Rapateaceae

Arecales Bromhead
Arecaceae

Commelinales Dumort.
Commelinaceae
Haemodoraceae
Philydraceae
Pontederiaceae

Poales Small

Anarthriaceae
Centrolepidaceae
Cyperaceae
Ecdeiocoleaceae
Eriocaulaceae
Flagellariaceae
Hydatellaceae
Joinvilleaceae
Juncaceae
Poaceae
Prioniaceae
Restionaceae
Sparganiaceae
Thurniaceae
Typhaceae
Xyridaceae

Zingiberales Griseb.
Cannaceae
Costaceae
Heliconiaceae
Lowiaceae
Marantaceae
Musaceae
Strelitziaceae
Zingiberaceae

EUDICOTS

Buxaceae
Didymelaceae
Sabiaceae
Trochodendraceae
[+Tetracentraceae]

Proteales Dumort.
Nelumbonaceae
Platanaceae
Proteaceae

Ranunculales Dumort.
Berberidaceae
Circaeasteraceae
[+Kingdoniaceae]
Eupteleaceae
Lardizabalaceae
Menispermaceae
Papaveraceae
[+Fumariaceae]
[+Pteridophyllaceae]
Ranunculaceae

CORE EUDICOTS

Aextoxicaceae
Berberidopsidaceae
Dilleniaceae
Gunneraceae
Myrothamnaceae
Vitaceae

Caryophyllales Perleb
Achatocarpaceae
Aizoaceae
Amaranthaceae
Ancistrocladaceae
Asteropeiaceae
Basellaceae
Cactaceae
Caryophyllaceae
Didiereaceae
Dioncophyllaceae
Droseraceae
Drosophyllaceae
Frankeniaceae
Molluginaceae
Nepenthaceae
Nyctaginaceae
Phytenaceae
Phytolaccaceae
Plumbaginaceae
Polygonaceae
Portulacaceae
Rhabdodendraceae
Sarcobataceae
Simmondsiaceae
Stegnospermataceae
Tamaricaceae

Santalales Dumort.
Olacaceae
Opiliaceae
Loranthaceae
Misodendraceae
Santalaceae

Saxifragales Dumort.
Altingiaceae
Cercidiphyllaceae
Crassulaceae
Daphniphyllaceae
Grossulariaceae
Haloragaceae
Hamamelidaceae
Iteaceae
Paeoniaceae

Penthoraceae
Pterostemonaceae
Saxifragaceae
Tetracarpaceae

ROSIDS

Aphloiaceae
Crossosomataceae
Ixerbaceae
Krameriaceae
Picramniaceae
Podostemaceae
Stachyuraceae
Staphyleaceae
Tristichaceae
Zygophyllaceae

Geraniales Dumort.
Francoaceae
Geraniaceae
[+Hypseocharitaceae]
Greyiaceae
Ledocarpaceae
Melianthaceae
Vivianiaceae

EUROSIDS I

Celastraceae
Huaceae
Parnassiaceae
[+Lepuropetalaceae]
Stackhousiaceae

Cucurbitales Dumort.
Anisophylleaceae
Begoniaceae
Coriariaceae
Corynocarpaceae
Cucurbitaceae
Datisceae
Tetramelaceae

Fabales Bromhead
Fabaceae
Polygalaceae
Quillajaceae
Surianaceae

Fagales Engl.
Betulaceae

Casuarinaceae
Fagaceae
Juglandaceae
Myricaceae
Nothofagaceae
Rhoipteleaceae
Ticodendraceae

Malpighiales Mart.
Achariaceae
Balanopaceae
Caryocaraceae
Chrysobalanaceae
Clusiaceae
Dichapetalaceae
Erythroxylaceae
Euphorbiaceae
Euphroniaceae
Flacourtiaceae
Goupiaceae
Hugoniaceae
Humiriaceae
Irvingiaceae
Ixonanthaceae
Lacistemataceae
Linaceae
Malesherbiaceae
Malpighiaceae
Medusagynaceae
Ochnaceae
Pandaceae
Passifloraceae
Putranjivaceae
Quiinaceae
Rhizophoraceae
Salicaceae
Scyphostegiaceae
Trigoniaceae
Turneraceae
Violaceae

Oxalidales Heinze
Cephalotaceae
Connaraceae
Cunoniaceae
Elaeocarpaceae
Oxalidaceae
Tremandraceae

Rosales Perleb
Barbeyaceae
Cannabaceae
Cecropiaceae
Celtidaceae

Dirachmaceae
Elaeagnaceae
Moraceae
Rhamnaceae
Rosaceae
Ulmaceae
Urticaceae

EUROSIDS II

Tapisciaceae

Brassicales Bromhead
Akaniaceae
[+Bretschneideraceae]
Bataceae
Brassicaceae
Caricaceae
Emblingiaceae
Gyrostemonaceae
Koeberliniaceae
Limnanthaceae
Moringaceae
Pentadiplandraceae
Resedaceae
Salvadoraceae
Setchellanthaceae
Tovariaceae
Tropaeolaceae

Malvales Dumort.
Bixaceae
[+Diegodendraceae]
Cistaceae
Cochlospermaceae
Dipterocarpaceae
Malvaceae
Muntingiaceae
Neuradaceae
Sarcolaenaceae
Sphaerosepalaceae
Thymelaeaceae

Myrtales Rchb.
Alzateaceae
Combretaceae
Crypteroniaceae
Heteropyxidaceae
Lythraceae
Melastomataceae
Memecylaceae
Myrtaceae
Oliniaceae

Onagraceae
 Penaecaeae
 Psiloxylaceae
 Rhynchocalycaceae
 Vochysiaceae

Sapindales Dumort.
 Anacardiaceae
 Biebersteiniaceae
 Burseraceae
 Kirkiaceae
 Meliaceae
 Nitrariaceae
 [+Peganaceae]
 Rutaceae
 Sapindaceae
 Simaroubaceae

ASTERIDS

Cornales Dumort.
 Cornaceae
 [+Nyssaceae]
 Grubbiaceae
 Hydrangeaceae
 Hydrostachyaceae
 Loasaceae

Ericales Dumort.
 Actinidiaceae
 Balsaminaceae
 Clethraceae
 Cyrillaceae
 Diapensiaceae
 Ebenaceae
 Ericaceae
 Fouquieriaceae
 Halesiaceae
 Lecythidaceae
 Marcgraviaceae
 Myrsinaceae
 Pellicieraceae
 Polemoniaceae
 Primulaceae
 Roridulaceae
 Sapotaceae
 Sarraceniaceae
 Styracaceae
 Symplocaceae
 Ternstroemiaceae
 Tetrameristaceae
 Theaceae
 Theophrastaceae

EUASTERIDS I

Boraginaceae
 Plocospermataceae
 Vahliaceae

Garryales Lindl.
 Aucubaceae
 Eucommiaceae
 Garryaceae
 Oncothecaceae

Gentianales Lindl.
 Apocynaceae
 Gelsemiaceae
 Gentianaceae
 Loganiaceae
 Rubiaceae

Lamiales Bromhead
 Acanthaceae
 Avicenniaceae
 Bignoniaceae
 Buddlejaceae
 Byblidaceae
 Cyclocheilaceae
 Gesneriaceae
 Lamiaceae
 Lentibulariaceae
 Myoporaceae
 Oleaceae
 Orobanchaceae
 Paulowniaceae
 Pedaliaceae
 [+Martyiaceae]
 Phrymaceae
 Plantaginaceae
 Schlegeliaceae
 Scrophulariaceae
 Stilbaceae
 Tetrachondraceae
 Verbenaceae

Solanales Dumort.
 Convolvulaceae
 Hydroleaceae
 Montiniaceae
 Solanaceae
 Sphenocleaceae

EUASTERIDS II

Adoxaceae
 Bruniaceae
 Carlemanniaceae
 Columelliaceae
 [+Desfontainiaceae]
 Eremosynaceae
 Escalloniaceae
 Icacinaceae
 Polyosmaceae
 Sphenostemonaceae
 Tribelaceae

Apiales Nakai
 Apiaceae
 Araliaceae
 Aralidiaceae
 Griselinaceae
 Melanophyllaceae
 Pittosporaceae
 Torricelliaceae

Aquifoliales Senft
 Aquifoliaceae
 Helwingiaceae
 Phyllonomaceae

Asterales Lindl.
 Alseuosmiaceae
 Argophyllaceae
 Asteraceae
 Calyceraceae
 Campanulaceae
 [+Lobeliaceae]
 Carpodetaceae
 Donatiaceae
 Goodeniaceae
 Menyanthaceae
 Pentaphragmataceae
 Phellinaceae
 Rousseaceae
 Styliaceae

Dipsacales Dumort.
 Caprifoliaceae
 Diervillaceae
 Dipsacaceae
 Linnaeaceae
 Morinaceae
 Valerianaceae

FAMILIES OF UNCERTAIN POSITION

Balanophoraceae
 Bonnetiaceae
 Cardiopteridaceae
 Ctenolophonaceae
 Cynomoriaceae
 Cytinaceae
 Dipentodontaceae
 Elatinaceae
 Geissolomataceae
 Hoplostigmataceae
 Kaliphoraceae
 Lepidobotryaceae
 Lissocarpaceae
 Lophopyxidaceae
 Medusandraceae
 Metteniusaceae
 Mitrastemonaceae
 Paracryphiaceae
 Pentaphylacaceae
 Peridiscaceae
 Plagiopteraceae
 Pottingeriaceae
 Sladeniaceae
 Strasburgeriaceae
 Tepuianthaceae

ORDINAL SYNONYMS

Acanthales Lindl. = Lamiales	Austrobaileyales Takht. ex Reveal	Calycanthales Mart. = Laurales
Acerales Lindl. = Sapindales	- not accepted, family at beginning of system	Calycerales Takht. ex Reveal = Asterales
Actinidiales Takht. ex Reveal = Ericales	Avenales Bromhead = Poales	Campanulales Rchb. = Asterales
Adoxales Nakai - not accepted, family under euasterids II	Balanopales Engl. = Malpighiales	Canellales Cronquist - not accepted, family at beginning of system
Aesculales Bromhead = Sapindales	Balanophorales Dumort. - not accepted, family unplaced	Cannales Dumort. = Zingiberales
Agavales Hutch. = Asparagales	Balsaminales Lindl. = Ericales	Capparales Hutch. = Brassicales
Alliales Traub = Asparagales	Barbeyales Takht. & Reveal = Rosales	Caprifoliales Lindl. = Dipsacales
Alstroemeriales Hutch. = Liliales	Batales Engl. = Brassicales	Cardioperidales Takht. - not accepted, family under euasterids II
Altingiales Doweld = Saxifragales	Begoniales Dumort. = Cucurbitales	Carduales Small = Asterales
Amaranthales Dumort. = Caryophyllales	Berberidales Dumort. = Ranunculales	Caricales L.D.Benson = Brassicales
Amaryllidales Bromhead = Asparagales	Betulales Bromhead = Fagales	Cassiales Horan. = Fabales
Ambrosiales Dumort. = Asterales	Biebersteinales Takht. = Sapindales	Casuarinales Lindl. = Fagales
Ammiales Small = Apiales	Bignoniales Lindl. = Lamiales	Celastrales Baskerville - not accepted, family under eurosids I
Amomales Lindl. = Zingiberales	Bixales Lindl. = Malvales	Centrolepidales Takht. = Poales
Ancistrocladales Takht. = Caryophyllales	Boraginales Dumort. - not accepted, family under euasterids I	Cephalotales Nakai = Oxalidales
Annonales Lindl. = Magnoliales	Brexiales Lindl. - not accepted, family under eurosids I	Cercidiphyllales Hu ex Reveal = Saxifragales
Anthobolales Dumort. = Santalales	Bromeliales Dumort. - not accepted, family under commelinoids	Chenopodiales Dumort. = Caryophyllales
Apocynales Bromhead = Gentianales	Bruniales Dumort. - not accepted, family under euasterids II	Chironiales Griseb. = Gentianales
Aponogetonales Hutch. = Alismatales	Brunoniales Lindl. = Asterales	Chloranthales A.C.Sm. ex J.-F.Leroy - not accepted, family at beginning of system
Arales Dumort. = Alismatales	Burmannaiales Heinze = Dioscoreales	Cinchonales Lindl. = Gentianales
Araliales Reveal = Apiales	Burserales Baskerville = Sapindales	Circaeasterales Takht. = Ranunculales
Aralidiales Takht. ex Reveal = Apiales	Butomales Hutch. = Alismatales	Cistales Rchb. = Malvales
Aristolochiales Dumort. = Piperales	Buxales Takht. ex Reveal - not accepted, family under eudicots	Citrales Dumort. = Sapindales
Asarales Horan. = Piperales	Byblidales Nakai ex Reveal = Lamiales	Cocosales Nakai = Arecales
Asclepiadales Dumort. = Gentianales	Cactales Dumort. = Caryophyllales	Colchicales Dumort. = Liliales
Asteliales Dumort. = Asparagales	Callitrichales Dumort. = Lamiales	Combretales Baskerville = Myrtales
Atriplicales Horan. = Caryophyllales		
Aucubales Takht. = Garryales		

Connarales Takht. ex Reveal = Cunoniales	Elaeocarpaceales Takht. = Oxalidales	Haemodorales Hutch. = Commelinales
Convolvulales Dumort. = Solanales	Elatiniales Nakai - not accepted, family unplaced	Haloragales Bromhead = Saxifragales
Coriariales Lindl. = Cucurbitales	Elodeales Nakai = Alismatales	Hamamelidales Griseb. = Saxifragales
Corylales Dumort. = Fagales	Empetrales Raf. = Ericales	Hanguanales R.Dahlgren ex Reveal = not accepted, family under commelinoids
Corynocarpales Takht. = Cucurbitales	Eriocaulales Nakai = Poales	Helleborales Nakai = Ranunculales
Crassulales Lindl. = Saxifragales	Eucommiales Nemejc ex Cronquist = Garryales	Helwingiales Takht. = Aquifoliales
Crossosomatales Takht. ex Reveal - not accepted, family under rosids	Euphorbiales Lindl. = Malpighiales	Himantandres Doweld and Shevryyova = Magnoliales
Cunoniales Hutch. = Oxalidales	Eupomatiales Takht. ex Reveal = Magnoliales	Hippuridales Pulle ex Reveal = Lamiales
Cyclanthales J.H.Schaffn. = Pandanales	Eupteleales Hu ex Reveal = Ranunculales	Homaliales Bromhead = Malpighiales
Cymodoceales Nakai = Alismatales	Euryalales H.L.Li - not accepted, family at beginning of system	Hortensiales Griseb. = Cornales
Cynomorales Burnett - not accepted, family unplaced	Ficales Dumort. = Rosales	Hydatellales Cronquist = Poales
Cyperales Hutch. = Poales	Flacourtiiales Heinze = Malpighiales	Hydnorales Takht. ex Reveal - not accepted, family at beginning of system
Cytinales Dumort. - not accepted, family unplaced	Fouquieriales Takht. ex Reveal = Ericales	Hydrangeales Nakai = Cornales
Daphnales Lindl. = Malvales	Francoales Takht. = Geraniales	Hydrastidales Takht. = Ranunculales
Daphniphyllales Pulle ex Cronquist = Saxifragales	Frangulales Wirtg. = Rosales	Hydropeptidales (Bartl.) Spenn. - not accepted, family Nymphaeaceae at beginning of system
Datiscales Dumort. = Cucurbitales	Galiales Bromhead = Gentianales	Hydrostachyales Diels ex Reveal = Cornales
Desfontainiales Takht. - not accepted, family under euasterids II	Geissolomatales Takht. ex Reveal - not accepted, family unplaced	Hypericales Dumort. = Malpighiales
Diapensiales Engl. & Gilg = Ericales	Gesneriales Dumort. = Lamiales	Hypoxidales Takht. = Asparagales
Didymelales Takht. - not accepted, family under eudicots	Glaucidiales Takht. ex Reveal = Ranunculales	Icacinales Tiegh. ex Reveal - not accepted, family under euasterids II
Dilleniales Hutch. - not accepted, family under core eudicots	Globulariales Dumort. = Lamiales	Illiciales Hu ex Cronquist - not accepted, family at beginning of system
Dioncophyllales Takht. ex Reveal = Caryophyllales	Goodeniales Lindl. = Asterales	Iridales Raf. = Asparagales
Diospyrales Prantl = Ericales	Greyiales Takht. = Geraniales	Ixiales Lindl. = Asparagales
Droserales Griseb. = Caryophyllales	Grossulariales Lindl. = Saxifragales	Jasminales Dumort. = Lamiales
Ebenales Engl. = Ericales	Gunnerales Takht. ex Reveal - not accepted, family under core eudicots	Juglandales Dumort. = Fagales
Elaeagnales Bromhead = Rosales	Gyrocarpaceales Dumort. = Laurales	Julianiales Engl. = Sapindales
	Gyrostemonales Takht. = Brassicales	

Juncaginales Hutch. = Alismatales	Mitrastemonales Makino - not accepted, family unplaced	Paridales Dumort. = Liliales
Juncales Dumort. = Poales	Monimiales Dumort. = Laurales	Parnassiales Nakai - not accepted, family under eurosids I
Lacistematales Baskerville = Malpighiales	Moringales Nakai = Brassicales	Passiflorales Dumort. = Malpighiales
Lactoridales Takht. ex Reveal = Piperales	Myricales Engl. = Fagales	Penaeales Lindl. = Myrtales
Lardizabalales Loconte = Ranunculales	Myristicales Thomé = Magnoliales	Petiveriales Lindl. = Caryophyllales
Lecythidales Cronquist = Ericales	Myrothamnales Nakai ex Reveal	Petrosaviales Takht. - not accepted, family under monocots
Leitneriales Engl. = Sapindales	- not accepted, family under core eudicots	Philydrales Dumort. = Commelinales
Lentibulariales Lindl. = Lamiales	Myrsinales Spenn. = Ericales	Physenales Takht. = Caryophyllales
Ligustrales Bartl. ex Bisch. = Lamiales	Najadales Dumort. = Alismatales	Pinguiculales Dumort. = Lamiales
Limnanthales Nakai = Brassicales	Narcissales Dumort. = Asparagales	Pittosporales Lindl. = Apiales
Linales Baskerville = Malpighiales	Nartheciales Reveal & Zomlefer - not accepted, family under monocots	Plantaginales Lindl. = Lamiales
Loasales Bessey = Cornales	Nelumbonales Reveal = Proteales	Platanales J.H.Schaffn. = Proteales
Loganiales Lindl. = Gentianales	Nepenthales Dumort. = Caryophyllales	Plumbaginales Lindl. = Caryophyllales
Lonicerales T.Liebe = Dipsacales	Nolanales Lindl. = Solanales	Podophyllales Dumort. = Ranunculales
Loranthales Dumort. = Santalales	Nyctaginales Dumort. = Caryophyllales	Podostemales Lindl. = not accepted, family under rosids
Lythrales Caruel = Myrtales	Nymphaeales Dumort. = not accepted, family at beginning of system	Polemoniales Bromhead = Ericales
Marathrales Dumort. - not accepted, family Podostemaceae under rosids	Ochnales Hutch. ex Reveal = Malpighiales	Polygalales Dumort. = Fabales
Mayacaes Nakai - not accepted, family under commelinoids	Oenotherales Bromhead = Myrtales	Polygonales Dumort. = Caryophyllales
Medusagynales Takht. = Malpighiales	Olacales Benth. = Santalales	Pontederiales Hook f. = Commelinales
Medusandrales Brenan - not accepted, family unplaced	Oleales Lindl. = Lamiales	Portulacales Dumort. = Caryophyllales
Melanthiales R.Dahlgren ex Reveal	Onagrales Rchb. = Myrtales	Posidoniales Nakai = Alismatales
= Liliales	Opuntiales Willk. = Caryophyllales	Potamogetonales Dumort. = Alismatales
Melastomatales Oliv. = Myrtales	Orchidales Raf. = Asparagales	Primulales Dumort. = Ericales
Meliales Lindl. = Sapindales	Paeoniales Heinze = Saxifragales	Quercuales Burnett = Fagales
Menispermiales Bromhead = Ranunculales	Pandales Engl. & Gilg = Malpighiales	Rafflesiales Oliv. - not accepted, family at beginning of system
Menyanthales T.Yamaz. ex Takht.	Papaverales Dumort. = Ranunculales	Resedales Dumort. = Brassicales
= Asterales	Paracryphiales Takht. - not accepted, family unplaced	Restionales J.H.Schaffn. = Poales
Metteniusales Takht. - not accepted, family unplaced		

Rhamnales Dumort. = Rosales	Sedales Rchb. = Saxifragales	Tropaeolales Takht. ex Reveal = Brassicales
Rhinanthales Dumort. = Lamiales	Silinales Lindl. = Caryophyllales	Turnerales Dumort. = Malpighiales
Rhizophorales Tiegh. ex Reveal = Malpighiales	Simmondsiales Reveal = Caryophyllales	Typhales Dumort. = Poales
Rhodorales Horan. = Ericales	Smilacales Lindl. = Liliales	Ulmales Lindl. = Rosales
Rhoipteleales Novák ex Reveal = Fagales	Stellariales Dumort. = Caryophyllales	Urticales Dumort. = Rosales
Roriduales Nakai = Ericales	Stylidiales Takht. ex Reveal = Asterales	Vacciniales Dumort. = Ericales
Rubiales Dumort. = Gentianales	Styracales Bisch. = Ericales	Vallisneriales Nakai = Alismatales
Ruppiales Nakai = Alismatales	Taccales Dumort. = Dioscoreales	Velloziales R.Dahlgren ex Reveal
Rutales Perleb = Sapindales	Tamales Dumort. = Dioscoreales	= Pandanales
Sabiales Takht. = not accepted, family under eudicots	Tamaricales Hutch. = Caryophyllales	Veratrales Dumort. = Liliales
Salicales Lindl. = Malpighiales	Tecophilaeales Traub ex Reveal = Asparagales	Verbenales Horan. = Lamiales
Salvadorales R.Dahlgren ex Reveal	Theales Lindl. = Ericales	Viburnales Dumort. - not accepted, family under euasterids II
= Brassicales	Theligonales Nakai = Gentianales	Vincales Horan. = Gentianales
Samolales Dumort. = Ericales	Thymelaeales Willk. = Malvales	Violales Perleb = Malpighiales
Samydales Dumort. = Malpighiales	Tiliales Caruel = Malvales	Vitales Reveal - not accepted, family under core eudicots
Sanguisorbales Dumort. = Rosales	Tofieldiales Reveal & Zomlefer = Alismatales	Vochysiales Dumort. = Myrtales
Sapotales Hook f. = Ericales	Torricealiales Takht. ex Reveal = Apiales	Winterales A.C.Sm. ex Reveal - not accepted, family at beginning of system
Sarraceniales Bromhead = Ericales	Tovariales Nakai = Brassicales	Xyridales Lindl. = Poales
Scheuchzeriales B.Boivin = Alismatales	Trilliales Takht. = Liliales	Zosteriales Nakai = Alismatales
Scleranthales Dumort. = Caryophyllales	Triuridales Hook.f. - not accepted, family under monocots	Zygophyllales Takht. - not accepted, family under rosids
Scrophulariales Lindl. = Lamiales	Trochodendrales Takht. ex Cronquist	
Scyphostegiales Croizat = Malpighiales	- not accepted, family under eudicots	

SELECTED FAMILIAL SYNONYMS

Abrophyllaceae = Carpodetaceae
 Acanthochlamydeaceae =
 Velloziaceae
 Aceraceae = Sapindaceae
 Achradaceae = Sapotaceae
 Aegicerataceae = Myrsinaceae
 Agdestidaceae = Phytolaccaceae
 Aitoniaceae = Meliaceae
 Alangiaceae = Cornaceae
 Aloaceae = Asphodelaceae
 Alsinaceae = Caryophyllaceae
 Ambrosiaceae = Asteraceae
 Amygdalaceae = Rosaceae
 Androstachyaceae = Euphorbiaceae
 Antoniaceae = Loganiaceae
 Apodanthaceae = Rafflesiaceae
 Apostasiaceae = Ranunculaceae
 Aptandraceae = Olacaceae
 Aristoteliaceae = Elaeocarpaceae
 Asclepiadaceae = Apocynaceae
 Asteranthaceae = Lecythidaceae
 Avertroaceae = Oxalidaceae
 Avetraceae = Dioscoreaceae
 Balanitiaceae = Zygophyllaceae
 Barbeuiaceae = Phytolaccaceae
 Barclayaceae = Nymphaeaceae
 Barringtoniaceae = Lecythidaceae
 Baueraceae = Cunoniaceae
 Baxteriaceae = Dasypogonaceae
 Bembiciaceae = Flacourtiaceae
 Berzeliaceae = Bruniaceae
 Bischofiaceae = Euphorbiaceae
 Blepharocaryaceae = Anacardiaceae
 Boerlagellaceae = Sapotaceae
 Bombacaceae = Malvaceae
 Boopidaceae = Calyceraceae
 Bretschneideraceae = Akaniaceae
 Brexiaceae = Celastraceae
 Brunelliaceae = Cunoniaceae
 Brunoniaceae = Goodeniaceae
 Bumeliaceae = Sapotaceae
 Burchardiaceae = Colchicaceae
 Byttneriaceae = Malvaceae
 Cabombaceae = Nymphaeaceae
 Caesalpinhiaceae = Fabaceae
 Calectasiaceae = Dasypogonaceae
 Callitrichaceae = Plantaginaceae
 Calochortaceae = Liliaceae
 Camelliaceae = Theaceae
 Canotliaceae = Celastraceae
 Cansjeraceae = Opiliaceae
 Capparaceae = Brassicaceae
 Carduaceae = Asteraceae
 Cassythaceae = Lauraceae
 Chaillietiaceae = Dichapetalaceae
 Chenopodiaceae = Amaranthaceae
 Chionographidaceae =
 Melanthiaceae
 Chloanthaceae = Lamiaceae
 Chiorhiaceae = Asteraceae
 Cleomaceae = Brassicaceae
 Cleoraceae = Rutaceae
 Cobaeaceae = Polemoniaceae
 Compositae = Asteraceae
 Conostylidaceae = Haemodoraceae
 Cordiaceae = Boraginaceae
 Coridiaceae = Primulaceae
 Corokiaceae = Argophyllaceae
 Corylaceae = Betulaceae
 Croomiaceae = Stemonaceae
 Cruciferae = Brassicaceae
 Curtisiaceae = Cornaceae
 Cuscutaceae = Convolvulaceae
 Cyananthaceae = Campanulaceae
 Cyanastraceae = Tecophilaeaceae
 Cynocrambaceae nom. illeg. =
 Rubiaceae
 Cyphiaceae = Campanulaceae
 Cyphocarpaceae = Campanulaceae
 Cyrtopodiaceae = Orchidaceae
 Dactylanthaceae = Balanophoraceae
 Davidiaceae = Cornaceae
 Davidsoniaceae = Cunoniaceae
 Decaisneaceae = Lardizabalaceae
 Desfontainiaceae = Columelliaceae
 Dialypetalanthaceae = Rubiaceae
 Dianellaceae = Hemerocallidaceae
 Dichondraceae = Convolvulaceae
 Dichlidanthaceae = Polygalaceae
 Diegodendraceae = Bixaceae
 Dionaeaceae = Droseraceae
 Dracaenaceae = Convallariaceae
 Duabangaceae = Lythraceae
 Duceodendraceae = Solanaceae
 Dulongiaceae nom. illeg. =
 Phyllonomaceae
 Dysphaniaceae = Amaranthaceae
 Ehretiaceae = Boraginaceae
 Ellisiohyllaceae = Scrophulariaceae
 Empetraceae = Ericaceae
 Epacridaceae = Ericaceae
 Eremolepidaceae = Santalaceae
 Eriospemaceae = Convallariaceae
 Erycibaceae = Convolvulaceae
 Erythralaceae = Olacaceae
 Eucryphiaceae = Cunoniaceae
 Euryalaceae = Nymphaeaceae
 Exocarpaceae = Santalaceae
 Flindersiaceae = Rutaceae
 Foetidiaceae = Lecythidaceae
 Frangulaceae = Rhamnaceae
 Fumariaceae = Papaveraceae
 Funkiaceae = Agavaceae
 Galacaceae = Diapensiaceae
 Geitonoplesiaceae =
 Hemerocallidaceae
 Geniostomaceae = Loganiaceae
 Geosiridaceae = Iridaceae
 Gisekiaceae = Phytolaccaceae
 Glaucidiaceae = Ranunculaceae
 Globulariaceae = Plantaginaceae
 Goetzeaceae = Solanaceae
 Gonystylaceae = Thymelaeaceae
 Gouaniaceae = Rhamnaceae
 Gramineae = Poaceae
 Gronoviaceae = Loasaceae
 Gustaviaceae = Lecythidaceae
 Guttiferae = Clusiaceae
 Gyrocarpaceae = Hernandiaceae
 Halophilaceae = Hydrocharitaceae
 Halophytaceae = Amaranthaceae
 Hectorellaceae = Portulacaceae
 Heliotropiaceae = Boraginaceae
 Heloniaceae = Melanthiaceae
 Helosidaceae = Balanophoraceae
 Henriqueziaceae = Rubiaceae
 Hippocastanaceae = Sapindaceae
 Hippocrateaceae = Celastraceae
 Hippuridaceae = Plantaginaceae
 Hortoniaceae = Monimiaceae
 Hostaceae = Agavaceae
 Humbertiaceae = Convolvulaceae
 Hydrastidaceae = Ranunculaceae
 Hydrocotylaceae = Araliaceae
 Hydropeltidaceae = Nymphaeaceae
 Hydrophyllaceae = Boraginaceae
 Hymenocardiaceae = Euphorbiaceae
 Hypecoaceae = Papaveraceae
 Hypericaceae = Clusiaceae
 Hypseocharitaceae = Geraniaceae
 Idiospermeaceae = Caryophyllaceae
 Illecebraceae = Caryophyllaceae
 Jasionaceae = Campanulaceae
 Jasminiaceae = Oleaceae
 Johnsoniaceae = Hemerocallidaceae
 Julianiaceae = Anacardiaceae
 Kiggelariaceae = Flacourtiaceae
 Kingdoniaceae = Circaeasteraceae
 Kirengeshomaceae = Hydrangeaceae
 Labiatae = Lamiaceae
 Langsdorffiaceae = Balanophoraceae
 Leeaceae = Vitaceae
 Leguminosae = Fabaceae
 Leitneriaceae = Simaroubaceae
 Lemnaceae = Araceae
 Lenoaceae = Boraginaceae
 Leoniaceae = Violaceae
 Lepuropetalaceae = Parnassiaceae
 Lilaaceae = Juncaginaceae
 Limoniaceae = Plumbaginaceae
 Liriodendraceae = Magnoliaceae
 Lobeliaceae = Campanulaceae
 Lomandraceae = Laxmanniaceae
 Lophiraceae = Ochnaceae
 Lophophytaceae = Balanophoraceae
 Luxemburgiaceae = Ochnaceae
 Malaceae = Rosaceae
 Martyniaceae = Pedaliaceae
 Mastixiaceae = Cornaceae
 Medeolaceae = Liliaceae
 Meliosmaceae = Sabiaceae
 Mendonciaceae = Acanthaceae
 Mesembryanthemaceae = Aizoaceae
 Mimosaceae = Fabaceae
 Monotaceae = Dipterocarpaceae
 Monotropaceae = Ericaceae
 Mouririaceae = Memecylaceae
 Moutabeaceae = Polygalaceae
 Myriophyllaceae = Haloragaceae
 Mystropetalaceae = Balanophoraceae
 Najadaceae = Hydrocharitaceae
 Nandinaceae = Berberidaceae

Napoleonaceae = Lecythidaceae
 Naucleaceae = Rubiaceae
 Nectaropetalaceae = Erythroxylaceae
 Nelsoniaceae = Acanthaceae
 Nemacladaceae = Campanulaceae
 Nesogenaceae = Cyclocheilaceae
 Nolanaceae = Solanaceae
 Nolinaceae = Convallariaceae
 Nupharaceae = Nymphaeaceae
 Nyctanthaceae = Oleaceae
 Nyssaceae = Cornaceae
 Octoknemaceae = Olacaceae
 Offiaceae = Scrophulariaceae
 Ophiopogonaceae = Convallariaceae
 Osyridaceae = Santalaceae
 Pachysandraceae = Buxaceae
 Palmae = Arecaceae
 Papilionaceae = Fabaceae
 Peganaceae = Nitrariaceae
 Pentastemonaceae = Stemonaceae
 Peperomiaceae = Piperaceae
 Periplocaceae = Apocynaceae
 Peripterygiaceae = Cardiopteridaceae
 Petermanniaceae = Colchicaceae
 Petiveriaceae = Phytolaccaceae
 Philadelphaceae = Hydrangeaceae
 Phormiaceae = Hemerocallidaceae
 Phyllicaceae = Rhamnaceae
 Picrodendraceae = Euphorbiaceae
 Pinguiculaceae = Lentibulariaceae
 Pistaciaceae = Anacardiaceae
 Pistiaceae = Araceae
 Platystemonaceae = Papaveraceae
 Plumeriaceae = Apocynaceae
 Podoaceae = Anacardiaceae
 Podophyllaceae = Berberidaceae
 Polygonanthaceae =
 Anisophylleaceae
 Potaliaceae = Gentianaceae
 Pteroxylaceae = Rutaceae
 Pteridophyllaceae = Papaveraceae
 Punicaceae = Lythraceae
 Pyrolaceae = Ericaceae
 Ranzaniaceae = Berberidaceae
 Reaumuriaceae = Tamaricaceae
 Retziaceae = Stilbaceae
 Rhinanthaceae = Orobanchaceae
 Rhodoleiaceae = Hamamelidaceae
 Rhopalocarpaceae =
 Sphaerosepalaceae
 Rhynchothecaceae = Ledocarpaceae
 Roxburghiaceae = Stemonaceae
 Rusaceae = Convallariaceae
 Saccifoliaceae = Gentianaceae
 Salaciaceae = Celastraceae
 Salicorniaceae = Amaranthaceae
 Salpiglossidaceae = Solanaceae
 Sambucaceae = Adoxaceae
 Samolaceae = Primulaceae
 Saniculaceae = Apiaceae
 Sarcophytaceae = Balanophoraceae
 Sarcospermataceae = Sapotaceae
 Sargentodoxaceae = Lardizabalaceae
 Saurauiceae = Actinidiaceae
 Sauvagesiaceae = Ochnaceae
 Scaevolaceae = Goodeniaceae
 Scepaceae = Euphorbiaceae
 Schoepfiaceae = Olacaceae
 Sclerophylacaceae = Solanaceae
 Scoliopaceae = Liliaceae
 Scybaliaceae = Balanophoraceae
 Scytopetalaceae = Lecythidaceae
 Selaginaceae = Scrophulariaceae
 Sesamaceae = Pedaliaceae
 Sesuviaceae = Aizoaceae
 Siphonodontaceae = Celastraceae
 Sonneratiaceae = Lythraceae
 Spigeliaceae = Loganiaceae
 Stenomeridaceae = Dioscoreaceae
 Sterculiaceae = Malvaceae
 Stilaginaceae = Euphorbiaceae
 Strychnaceae = Loganiaceae
 Stylobasiaceae = Surianaceae
 Stylocerataceae = Buxaceae
 Symphoremataceae = Lamiaceae
 Syringaceae = Oleaceae
 Tetracentraceae = Trochodendraceae
 Tetradiclidaceae = Peganaceae
 Tetragoniaceae = Aizoaceae
 Tetrastylidiaceae = Olacaceae
 Thalassiaceae = Hydrocharitaceae
 Theligonaceae = Rubiaceae
 Thunbergiaceae = Acanthaceae
 Tiliaceae = Malvaceae
 Trapaceae = Lythraceae
 Trapellaceae = Pedaliaceae
 Tribulaceae = Zygophyllaceae
 Tricyrtidaceae = Liliaceae
 Trilliaceae = Melanthiaceae
 Triplostegiaceae = Valerianaceae
 Uapacaceae = Euphorbiaceae
 Ulluceae = Basellaceae
 Umbelliferae = Apiaceae
 Utriculariaceae = Lentibulariaceae
 Uvulariaceae = Colchicaceae
 Vacciniaceae = Ericaceae
 Viburnaceae = Adoxaceae
 Viscaceae = Santalaceae
 Viticaceae = Lamiaceae
 Walleriaceae = Tecophilaeaceae
 Wellstediaceae = Boraginaceae
 Xanthophyllaceae = Polygalaceae
 Xerophyllaceae = Melanthiaceae
 Zannichelliaceae =
 Potamogetonaceae

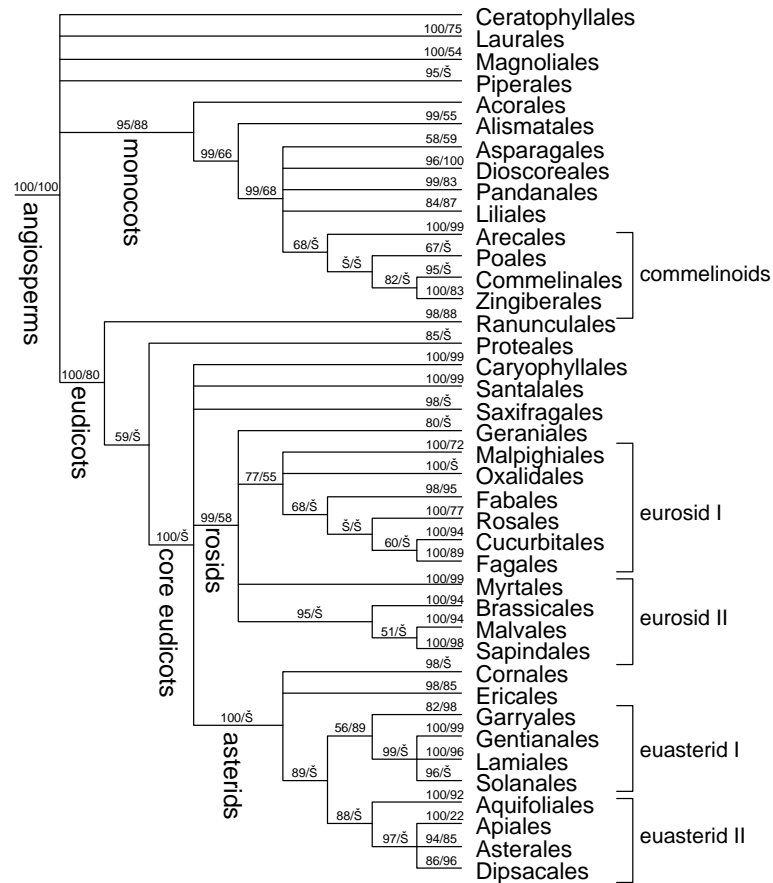


Figure 1. Phylogenetic interrelationships of the orders of flowering plants, compiled from recent cladistic analyses cited in the text. Jackknife support is given on the branches (a dash for values <50%), first jackknife values from analysis of 545 sequences of the *rbcL*, *atpB*, and 18S rDNA genes (D. E. Soltis, M. W. Chase, P. S. Soltis, D. Albach, M. E. Mort, V. Savolainen, M. Zanis, and J. S. Farris, unpublished, in preparation) and second jackknife values from analysis of 2538 *rbcL* sequences (Källersjö et al., 1998).